



Installation Instructions: Aqua1 Bulkhead (11590-95, 11600-05)

Read these instructions before installation and retain for future reference

This equipment should be installed by a competent electrician



Important Information

We recommend that luminaires are installed by a qualified electrician ensuring the installation complies with current IEE wiring regulations BS7671:2018 & local building control.

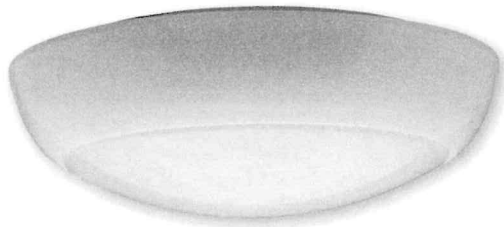
- All tests should be carried out in accordance to EN 50172:2004.
- BELL will not accept responsibility for any claims arising from a poor installation.

Important User Advice

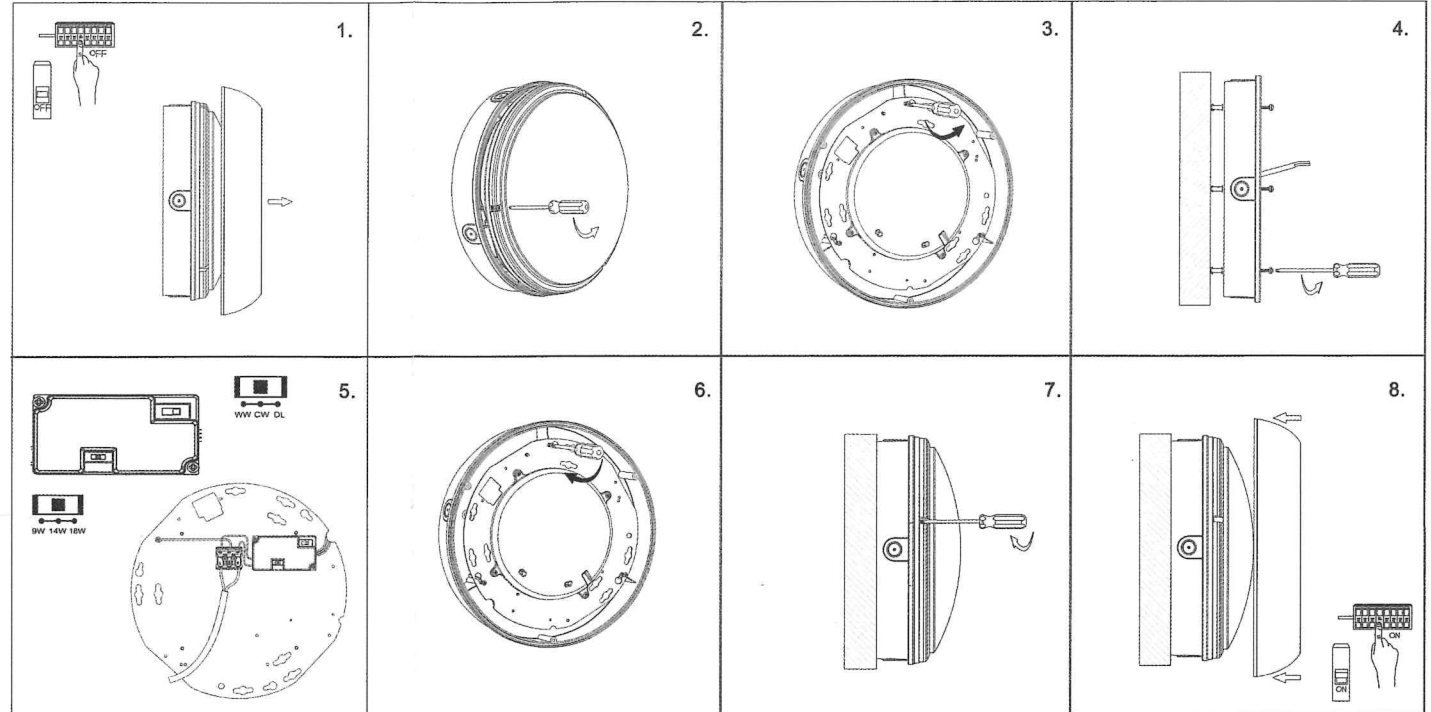
- The ambient room temperature should not exceed 30°C.
- Always switch off mains supply before installing.

This product may contain substances that can be hazardous to the environment if not disposed of properly. Electrical and electronic equipment should never be disposed of with general household waste but must be separated for its correct treatment and recovery.

Where possible recycle your packaging.

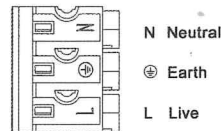


You are advised to test 5 samples before mass application of sensors in a new lighting project.

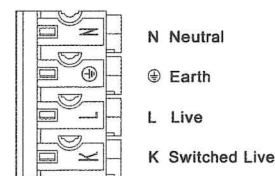


Wiring Diagrams

Standard / with Dimming Sensor:



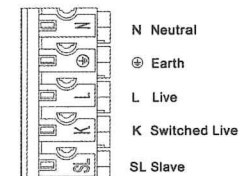
Emergency / Emergency c/w Dimming Sensor:



Microwave Sensor:



Emergency c/w Microwave Sensor:



Slave function is only available in the on/off sensor versions up to a maximum of 10 additional AQUA1 fittings

Technical Helpline +44 (0)1924 893380

www.bellighting.co.uk

British Electric Lamps Ltd
Unit A Foxbridge Way, Normanton Industrial Estate
Normanton, West Yorkshire. WF6 1TN

T: +44 (0)1924 893380 F: +44 (0)1924 894320 E: sales@bellighting.co.uk

www.bellighting.co.uk